

Virtual COM port (VCP) drivers cause the USB device to appear as an additional COM port available to the PC. Application software can access the USB device in the same way as it would access a standard COM port. FTDI's CDM drivers provide Virtual Com Port (VCP) functionality through a single driver install file <CDM 2.##.exe>

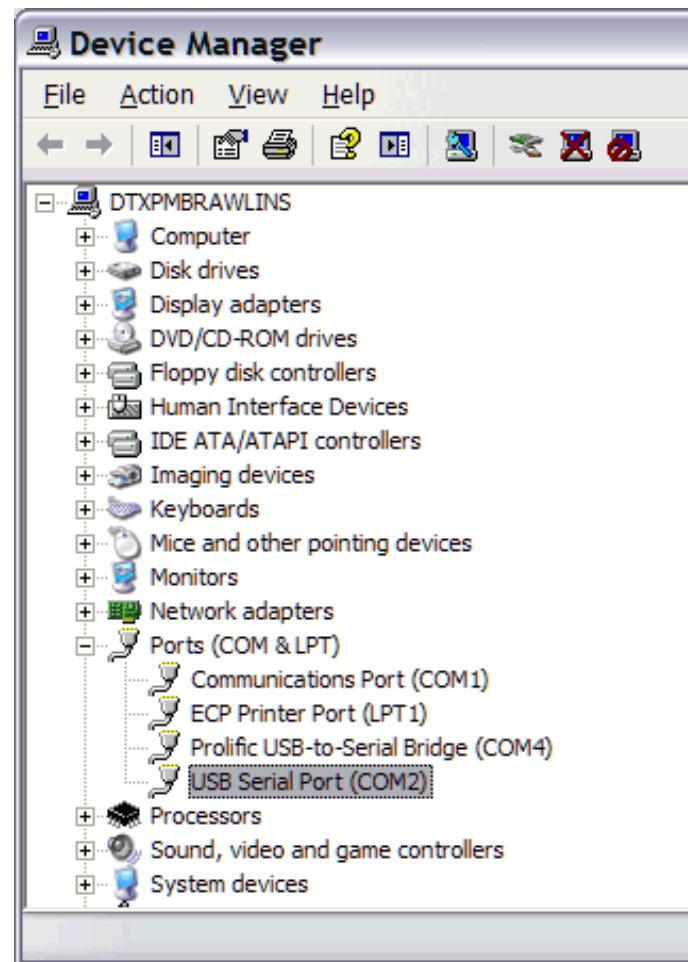
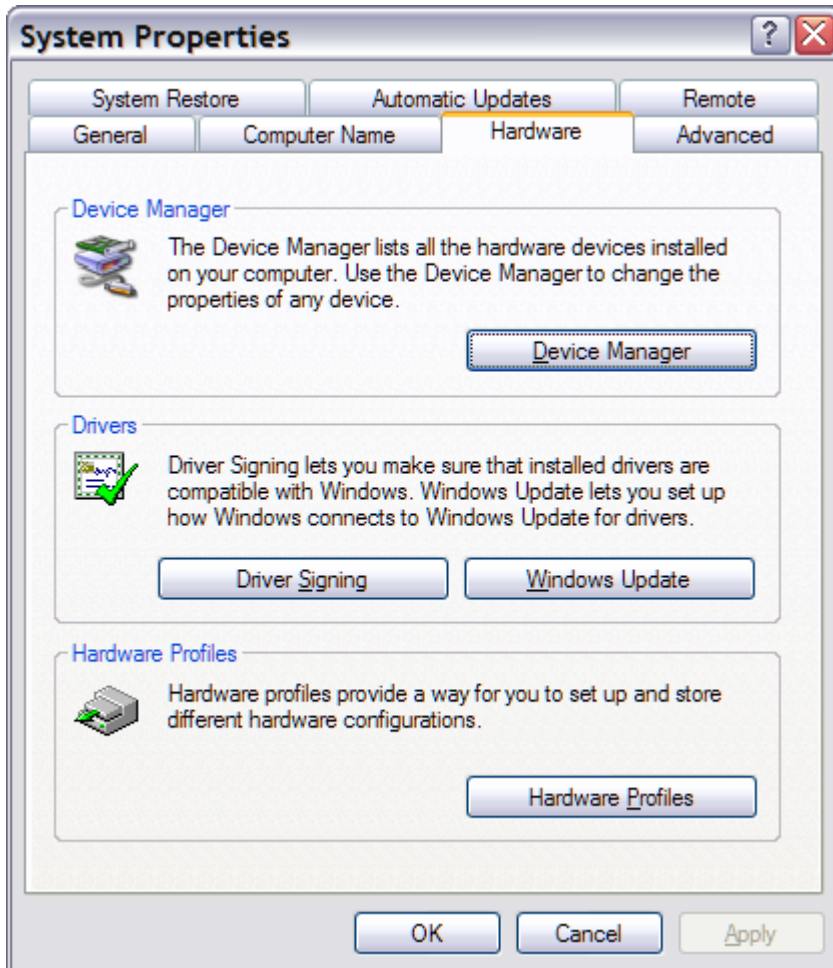
Use Windows Control Panel to specify which Com Port to assign for older applications which do not support ports above Com 4.

To see which com port was assigned go into the Control Panel and double click the system icon.

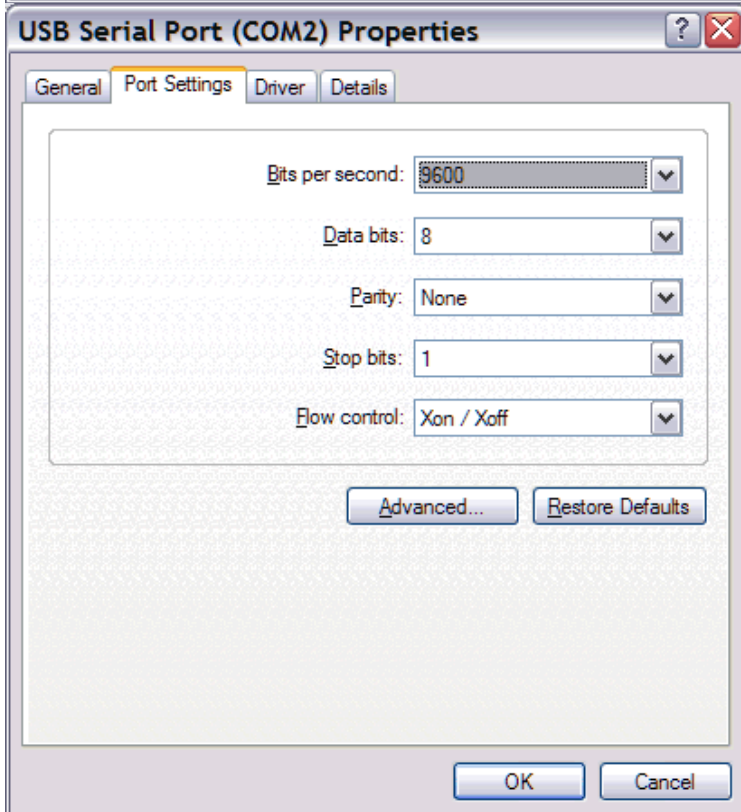
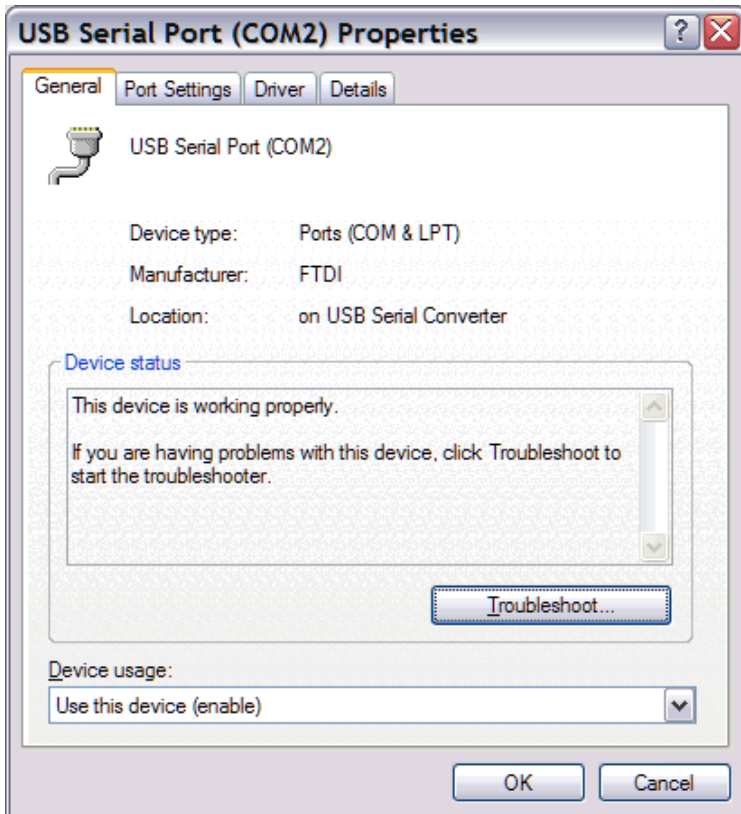


System

Go to the Hardware Tab and use the **Device Manager** button to navigate and expand out the Ports (COM & LPT).



If the com port needs to be changed to a different # Right click on the USB Serial Port and then choose Properties followed by the **Port Settings** tab.



Click the [Advanced...](#) button and select the desired com port you wish to use.

