

Inventory Accuracy, Visibility and Loss Prevention

Avery Dennison® EM Microelectronic IC RFID Inlays

Elevating Brands and Accelerating Performance Throughout the Global Retail Supply Chain



Accelerate Performance: Inventory Accuracy, Visibility and Loss Prevention

Improve Inventory Accuracy, Visibility and Loss Prevention through integrated solutions from manufacturing source to consumer that can help increase speed, accuracy, visibility, productivity and margins.

Common Sizes, Uncommon Performance and Durability

With the addition of the sensitivity and construction of EM Microelectronic to our popular AD-23x, AD-31x and AD-38x family of RFID inlays, a high level of readability, read range and durability can be achieved in applications such as:

- Item-level identification
- Carton and pallet
- Retail
- Asset
- Tote
- Automotive and industrial

Same Tag Size, More Tagging Options

- **AD-234eM:** Designed for global apparel and supply chain applications, the inlay fits into 3" common size labels
- **AD-382eM:** Medium size inlay provides high performance in a narrow format, ideal for printed fabric labels on apparel and home goods
- **AD-319eM:** Designed to enable expansion of tagging options, this inlay fits into a 1.75" x 0.75" (44.45mm x 19.05mm) label and is the highest performing inlay for European applications in this size

Flexible Media Options

- Thermal direct or thermal transfer face sheets
- Variety of supply sizes and adhesives to fit your individual needs
- Printed fabric labels for apparel and industrial applications

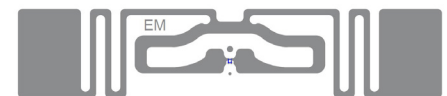
Availability

Label samples and pilot quantities are available now with inlay and media formats available in May, 2013. For additional inlay and media formats, contact your Avery Dennison representative.

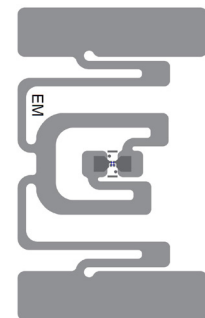
Elevating Brands. Accelerating Performance.

Experience this and many other supply chain solutions at our worldwide Customer Design and Innovation Centers. For more information on Avery Dennison RFID Inlays or to schedule a tour of our Customer Design and Innovation Centers, please call 800.543.6650, prompt 5, or e-mail rbis.solutions@averydennison.com.

Visit our website at www.rbis.averydennison.com.



AD234eM



AD382eM






AD319eM

Inventory Accuracy, Visibility and Loss Prevention

Avery Dennison® EM Microelectronic IC RFID Inlays

Elevating Brands and Accelerating Performance Throughout the Global Retail Supply Chain



	 AD-234eM	 AD-382eM	 AD-319eM
Antenna Dimensions	2.756 x 0.571 inches (70 x 14.5mm)	1.181 x 1.969 inches (30 x 50mm)	1.063 x 0.63 inches (41.4 x 16mm)
RFID Chipset	EM Microelectronic EM4124		
RF Protocol	EPCglobal Class 1 Gen 2, ISO/IEC 18000-6C		
EPC Memory	96 bits (pre-encoded support for Multi-vendor Chip-based Serialization (MCS))		
TID/UID Memory	64 bit manufacturer-programmed and locked Unique Identifier		
RoHS	EU Directive 2011/65EU compliant		
Operating Frequency	860 – 960 MHz		
Operating Temperature	-40° to 185 °F (-40 ° to 85 °C)		
Inlay Pitch	1.50 inches (38.1mm)	2.50 inches (63.5mm)	1.50 inches (38.1mm)
Inlay Formats	Dry*	Dry*	Dry*
Media Formats	Labels, hang tags and printed fabric labels	Labels, hang tags and printed fabric labels	Labels, hang tags and printed fabric labels

*Call your Avery Dennison Representative for additional inlay formats.

The information contained herein is believed to be reliable but Avery Dennison makes no representations concerning the accuracy or correctness of the data. This product, like any other should be tested by the customer/user thoroughly under end user conditions to ensure the product meets the particular requirements. Independent results may vary.

© 2013 Avery Dennison Corporation, All Rights Reserved.

Avery Dennison Retail Branding and Information Solutions

Americas
170 Monarch Lane
Miamisburg, OH 45342
Tel +1 866 903 RFID (7343)
Intl +1 770 965 0807
(8:00 a.m. - 6:00 p.m. EDT)

Asia
15/F, Octa Tower
8 Lam Chak Street
Kowloon Bay, Kowloon
Hong Kong
Tel +852 3146 8100
Fax +852 2785 1255

E. Europe, Middle East & Africa
TEM Otoyolu Atış Alani Mevkii,
Tekstil Kent Koza Plaza A Blok
Kat: 17-18 34235, Esenler
Istanbul
Turkey
Tel +90 212 467 4000
Fax +90 212 467 4001

Western Europe
Kempische Kaai 7C
3500 Hasselt
Belgium
Tel +32 11 28 77 24
Fax +32 11 28 77 29